



Field Trip 4

Highland Gems - *Maluti Mountain Diamonds, Lesotho*

Post-Conference Only

Leaders: Casey Hetman, SRK Consulting and Andre Fourie, Letseng Diamonds.

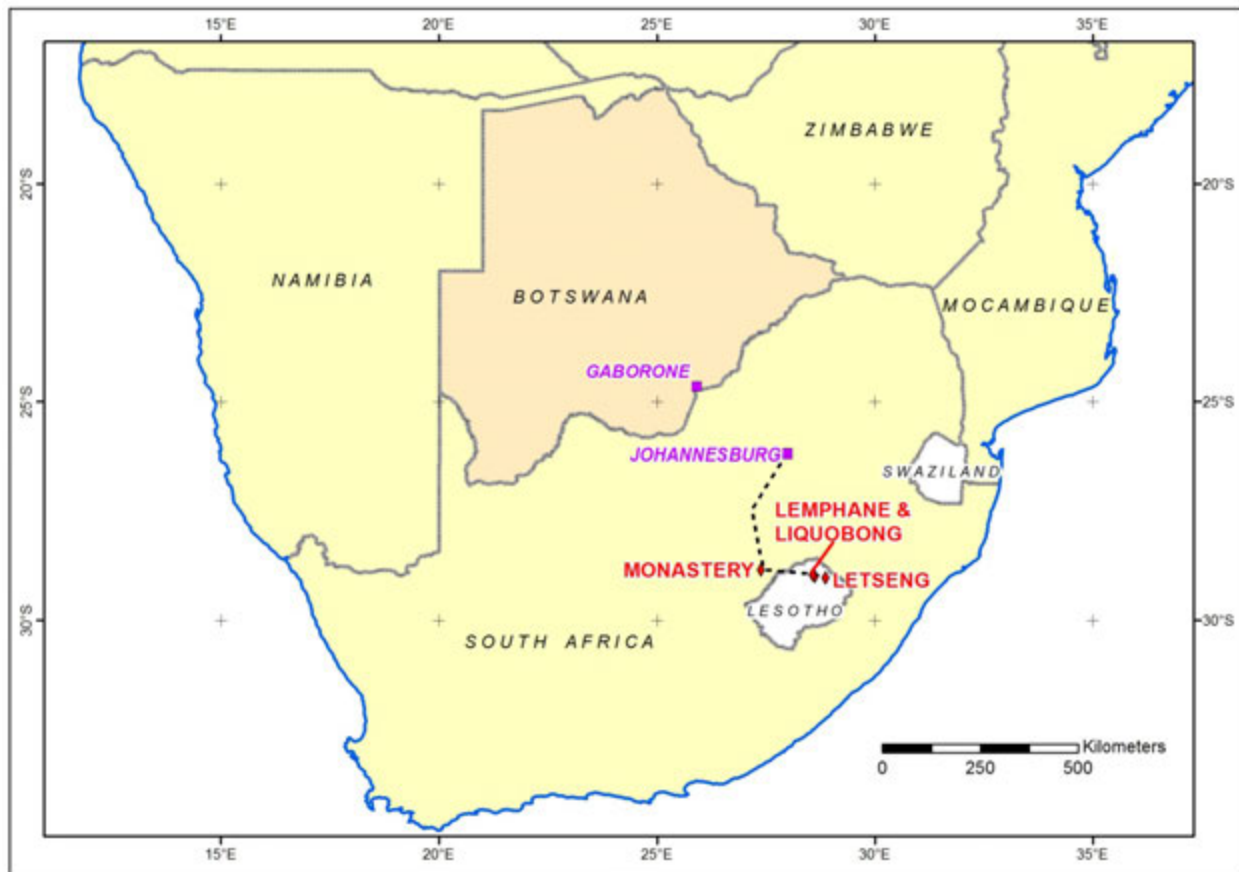
VERY IMPORTANT

- Delegates must provide their own PPE as outlined on the field trip overview page of www.11IKC.com
- All travel bookings and formalities to and from Johannesburg, South Africa are for your own arrangement and account
- All travel formalities such as visas to and from South Africa and Lesotho are for your own arrangement and account
- Though it is spring in southern Africa, it can still be very cold in Lesotho. All the mines and projects to be visited are at high altitudes, between 2500 and 3100m. A warm, waterproof and windproof jacket is advised.
- One to two twenty litre buckets will be provided per delegate for sample collection and shipping.
- Where sampling is allowed on field trips, there will be an opportunity to pack and courier samples at the end of each trip. The Organising Committee is intending to obtain sample export permits for each delegate to export from Lesotho the samples collected. These export permits will not



cover any samples collected other than on that particular field trip. Participants should not include samples from any other source. In particular, participants should not transport samples between countries.

WARNING: There is alcohol testing on all mines to be visited. If you fail the breathalyzer test you will be left outside the mine.





FIELD TRIP 4 – POST CONFERENCE ITINERARY

DATES: Saturday 23 September 2017 to Saturday 30 September 2017

Saturday 23rd September 2017

- pm Delegates meet at Johannesburg OR Tambo International Airport Garden Court Hotel.
- Accommodation with dinner at Johannesburg OR Tambo International Airport Garden Court Hotel.

Sunday 24th September 2017

- Depart early in four 4x4 double cabs for Lesotho via Golden Gate National Park and Clarens
- Accommodation at AfriSki Mountain Resort in Lesotho (5 nights)

Monday 25th September 2017

- Visit Letseng Diamond Mine, Letseng Diamonds (Pty) Ltd.
- Accommodation at AfriSki Mountain Resort

Tuesday 26th September 2017

- Visit
 - Lemphane Project, Paragon Diamonds and
 - Liqhobong Diamond Mine, Firestone Diamonds
- Accommodation at AfriSki Mountain Resort

Wednesday 27th September 2017

- Visit
 - Kao Mine, Storm Mountain Diamonds, and
 - Mothae Project, Paragon Diamonds
- Accommodation – AfriSki Mountain Resort



Thursday 28th September 2017

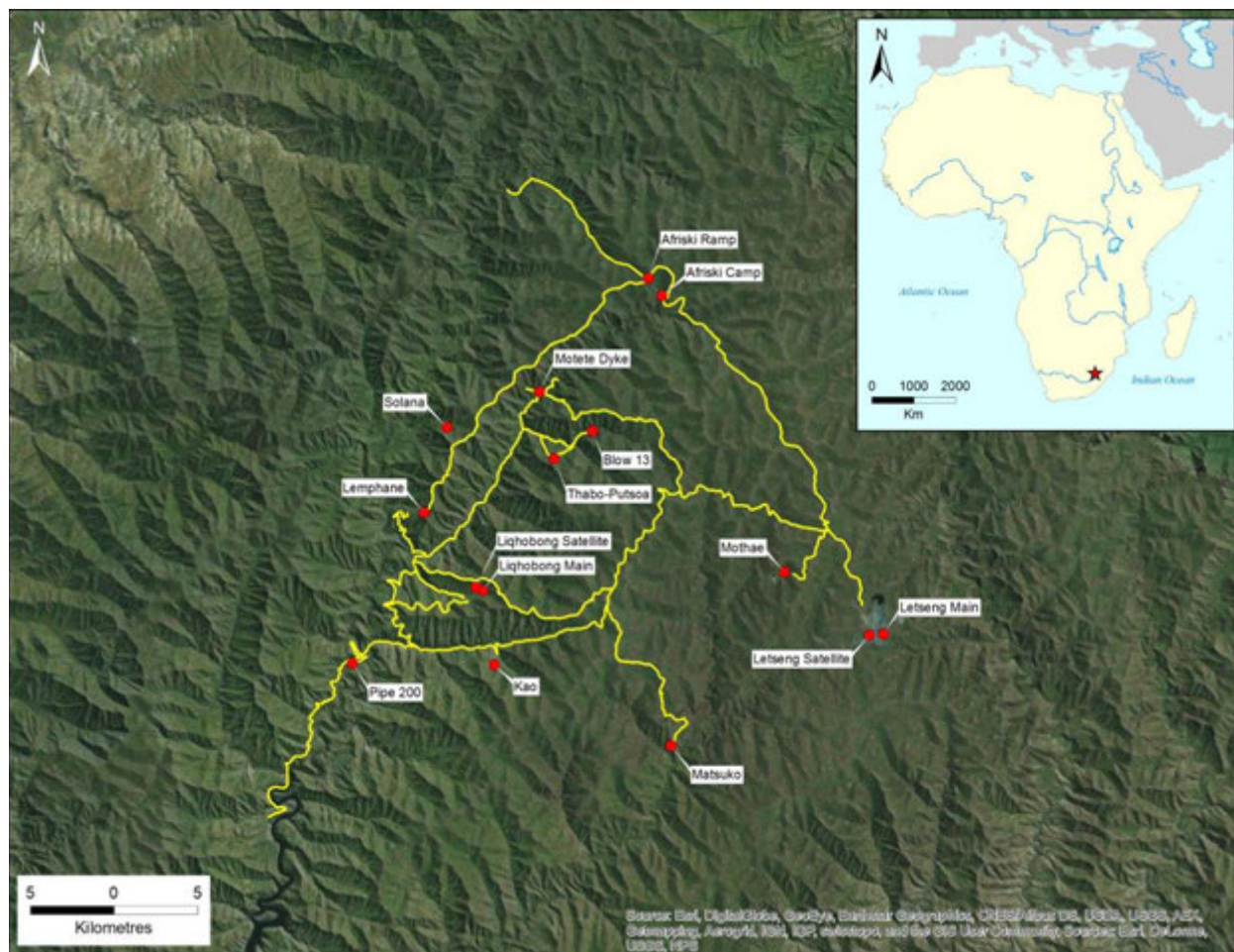
- Visit Motete Project, Paragon Diamonds
- Accommodation AfriSki Mountain Resort

Friday 29th September 2017

- Depart Lesotho
- Visit Monastery Mine in South Africa
- Drive back to Johannesburg
- Accommodation with dinner at Johannesburg OR Tambo International Airport Garden Court Hotel

Saturday 30th September 2017

- Courier service for those who collected rocks
- Depart Johannesburg for home under own arrangements



Locality map, Steve Grimmer, Paragon Diamonds.



Letseng Diamond Mine at 3000m at the top of the Lesotho Highlands also known as the Maluti Mountains. The Main Pipe open pit is in the foreground and the Satellite Pipe open pit is behind. Bob Burrell, Letseng Diamond Mine.



Letseng Diamond Mine with the Satellite Pipe open pit to the left and the Main Pipe open pit on the right. Bob Burrell, Letseng Diamond Mine.



Open pit, Letseng Diamond Mine. Bob Burrell, Letseng Diamond Mine.



Open pit, Letseng Diamond Mine. Bob Burrell, Letseng Diamond Mine.



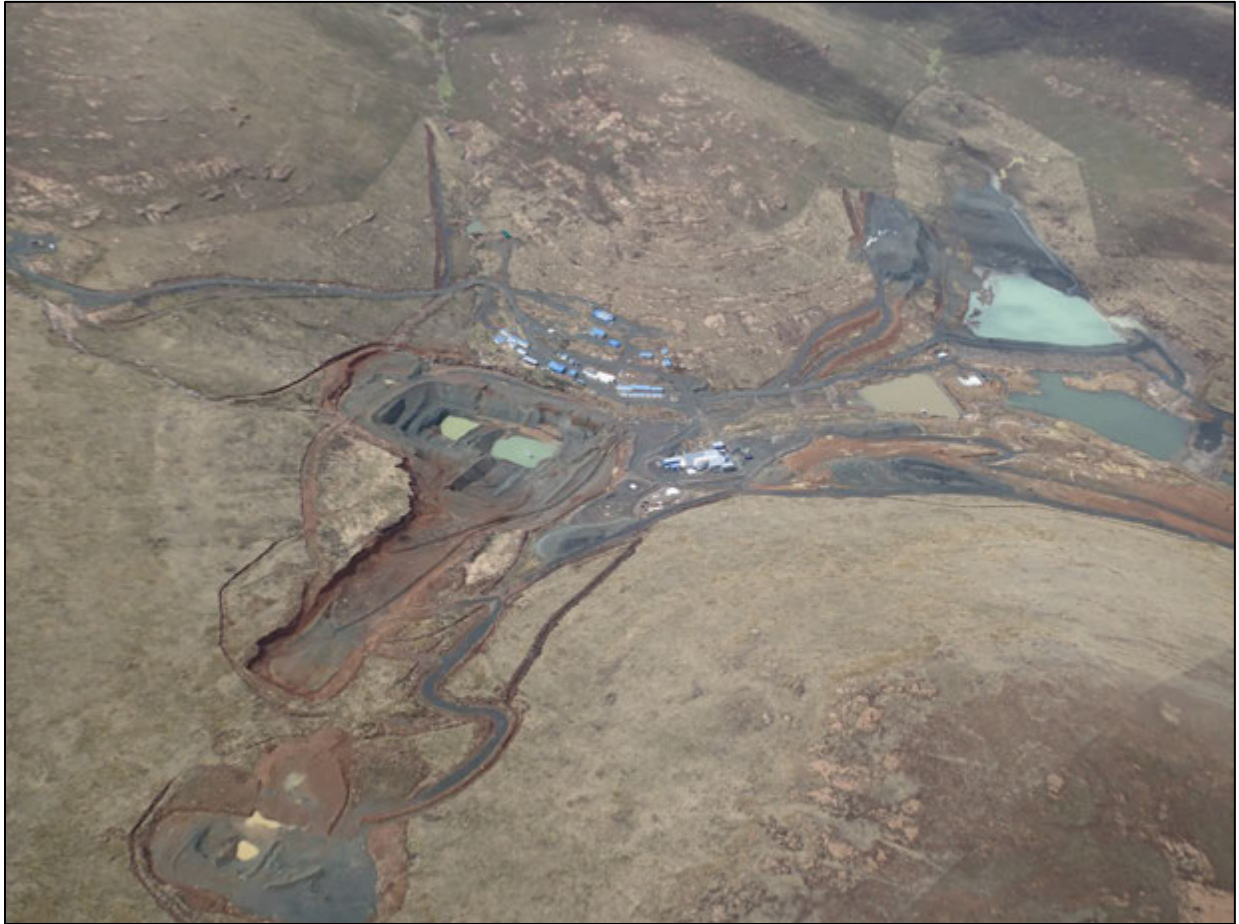
Lemphane kimberlite pit panorama. Steve Grimmer, Paragon Diamonds.



Aerial view of the Liqhobong Diamond Mine looking Southeast. Firestone Diamonds.



Kao Mine. Storm Mountain Diamonds.



Aerial view of the Mothae kimberlite, Steve Grimmer. Paragon Diamonds.



Motete Dyke. Steve Grimmer, Paragon Diamonds.